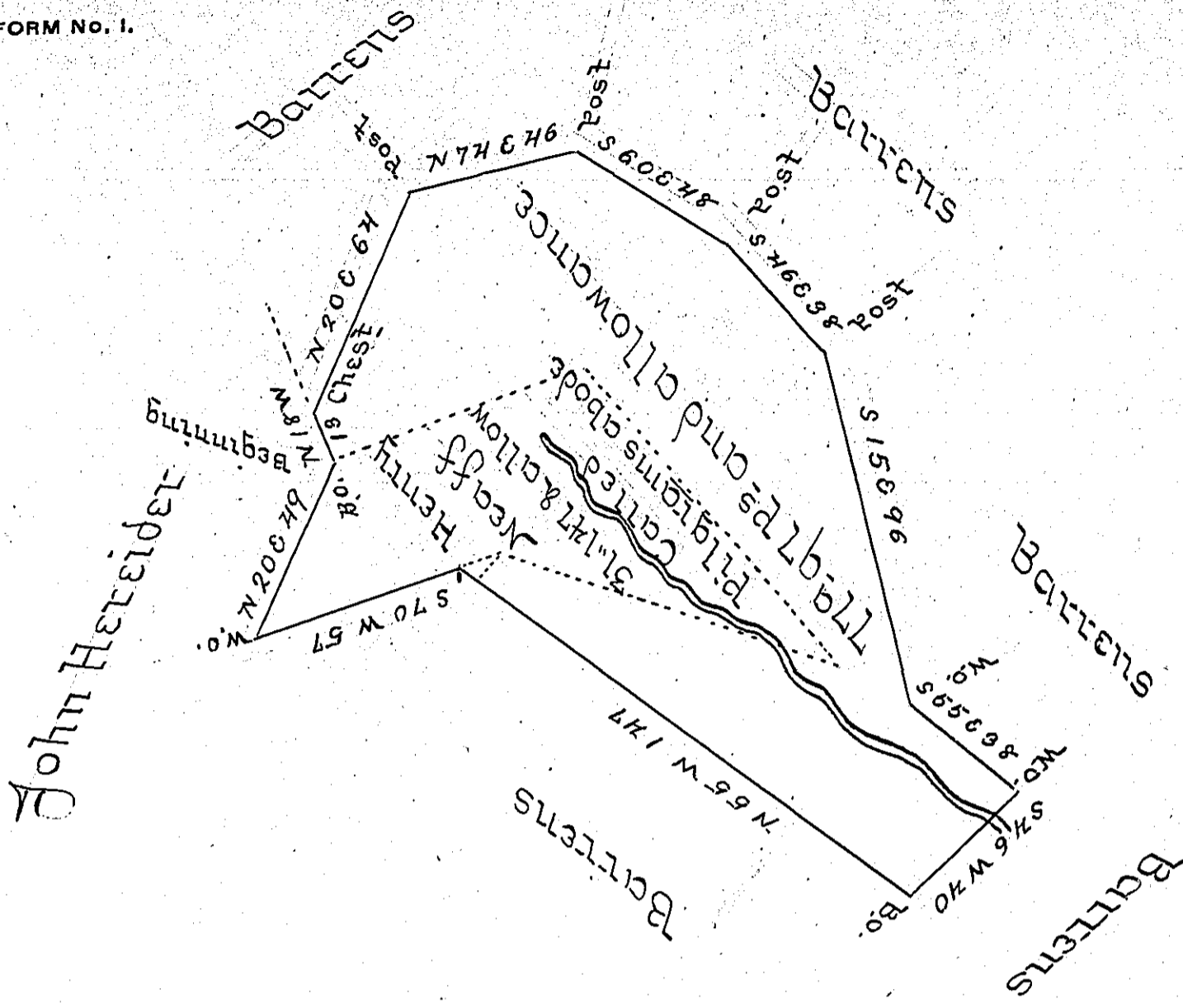


FORM NO. 1.



A Draught of a Tract of Land Situate in Codorus Township York County being Composed of two Tracts which were Surveyed and Returned for Henry Neaff the first 31<sup>st</sup> 1761 In pursuance of his Application N<sup>o</sup> 2348 Dated the 14<sup>th</sup> day of January 1767 the other In pursuance of the Application of Philip Steltz N<sup>o</sup> 3409 Dated the 22<sup>d</sup> of April 1767 and now at the Request of said Neaff Taken from William Matthews Record of Surveys and added together the 27<sup>th</sup> Day of the 2<sup>d</sup> Mo. 1768 Containing 100 $\frac{1}{2}$  and Allowances

W<sup>m</sup> Kearsy Dy Sr

To John Lukens Esq<sup>r</sup> }  
Surveyor General

IN TESTIMONY that the above is a copy of the original remaining on file in the Department of Internal Affairs of Pennsylvania, made conformably to an Act of Assembly approved the 16th day of February, 1833, I have hereunto set my Hand and caused the Seal of said Department to be affixed at Harrisburg, this thirtieth day of April 1906.

*Grace D. Brown*  
Secretary of Internal Affairs.